

ECOPRESS Mobile Compactors

Model MINI



ECOPRESS Mobile compactor is designed for pressing cardboard, foil and dry or semi-dry municipal waste, reduces the volume of stored waste and cost of its transportation. The compression ratio is from 1:3 to 1:10 for different types of waste providing the payback of the equipment.

EMC MINI is designed to compact waste materials in the limited space due to its smaller overall dimensions. With short distance of compaction plate movement and narrow width this machine is highly effective in higher payload per volume of container. It can be used with various collection vehicles as skiploader/liftdumper, mini and standard hook lift collection vehicles. It is suitable for operation in all weather conditions at temperatures from -50C to +50C with low noise level. The compaction system is managed by pressure sensors without any mechanical sensors to avoid possible malfunction during operation. Machine is equipped with protective sensors for oil level and overheating. Build in telemetry module supports online connection 24/7 and signals by email and SMS as well as re-program or service requirement notice.

ECOPRESS compactors are available in various different models of loading options, connection to object by stationary hopper, side or front mounted Wheelie Bin Tippers with or without automatic lid opener, front or side hinged backdoor and double end lift up option.

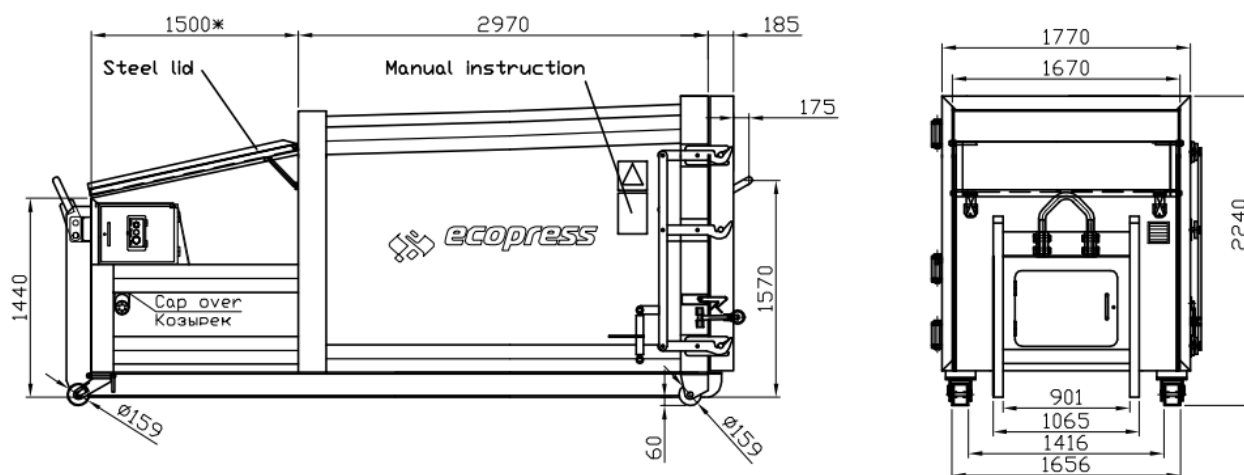
ECOPRESS compactors conform to Health & Safety and CE requirements of EU Directives 2006/42/EC, 89/392EEC, 91/368EEC, 93/44EEC, 93/68EEC on the safety of machinery and equipment and German accident prevention regulations.

Compactor capacity is from 6 to 14 m3.

TECHNICAL INFORMATION:

Pressing force, tons	26 / 28,2
Pressure, bar	210
Electric motor, kW	4 / 5,5
Operating Voltage	230V/400V/32A
Press plate size, L x W, mm	1500 x 500
Loading chamber volume, m ³	1,3
Loading chamber size - top, L x W, mm	1500x1000
Loading chamber size - bottom, L x W, mm	1500x850
Loading height, mm	1440
Output capacity per cycle, m ³	0,64
Output capacity per hour, m ³ /h	67,7
Compacting cycle, sec	34
Container volume, m ³	6-14
Cardboard payload, tons	2 - 3
Incineration waste payload, tons	3 - 6

EMC MINI DIMENSIONS:



Features

For skiploader/liftdumper vehicles or hooklift/roll-off tippers
Container 80 and 100% full light
Ram with plastic fine scraper at the bottom (ideal for scraps of paper)
Rubber seal on cylinder chamber
Pendulous retaining claws prevent the waste from springing back
Front hook can be folded down for easy filling
Problem-free emptying supported by three-sided conical container body
Discharge door with ratchet closure, hinges on the side or top
Cylinder mounted in rotatable eyelets
Maintenance friendly electrical switch cabinet and hydraulic unit are easily accessible from the side and from above.
Electronic safety controller is easily expandable for many additional functions
Container sandblasted and painted as per EN ISO 12944 C3M

Options

End position of the ram "open" or "closed"
Cable remote control
Pendulous steel scraper in front of the ram
Low feed opening 1320/1410mm for comfortable loading
Cover over filling opening optionally
Compactor pick up from both sides
Discharge door with seal
Maintenance hatch with safety limit switch
Additional integrated or portable container tipping mechanisms
Fill level, error or service requirement notification via GSM
Bin Lifting device integrated or stationary with own power pack
230/380V switch box panel
Timer to start / stop compaction
Automatic start with photo sensor
Oil heating system
Steel lid with 2 gas cylinders
Aluminum lid with 2 gas cylinders
High sides of loading chamber
High sides of loading chamber with side loading hatches
Fully leak-proof container (included in BIO models)
Ozone freshener odors remover
Waste feeding channel
Guiding rails, 3m or 6m
Solar panel station

